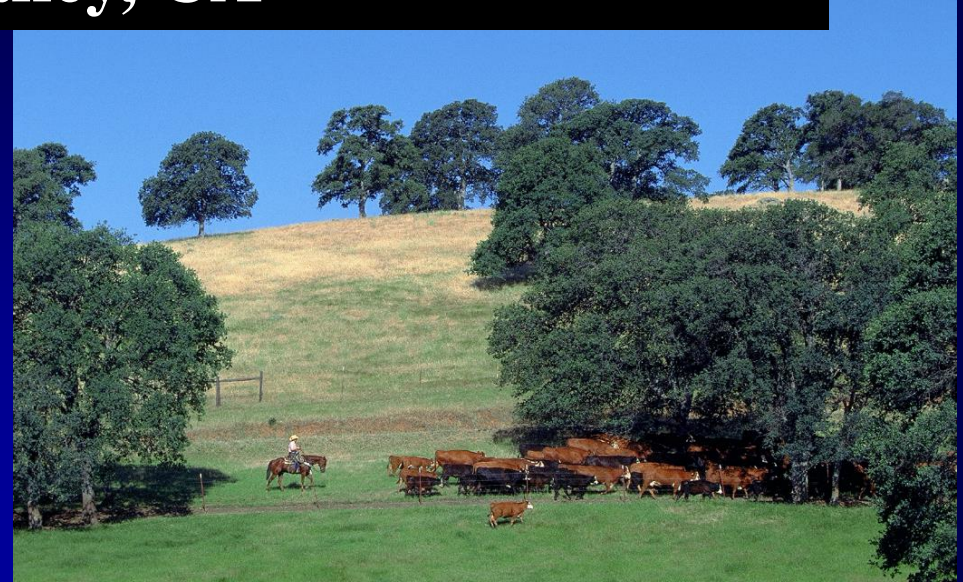
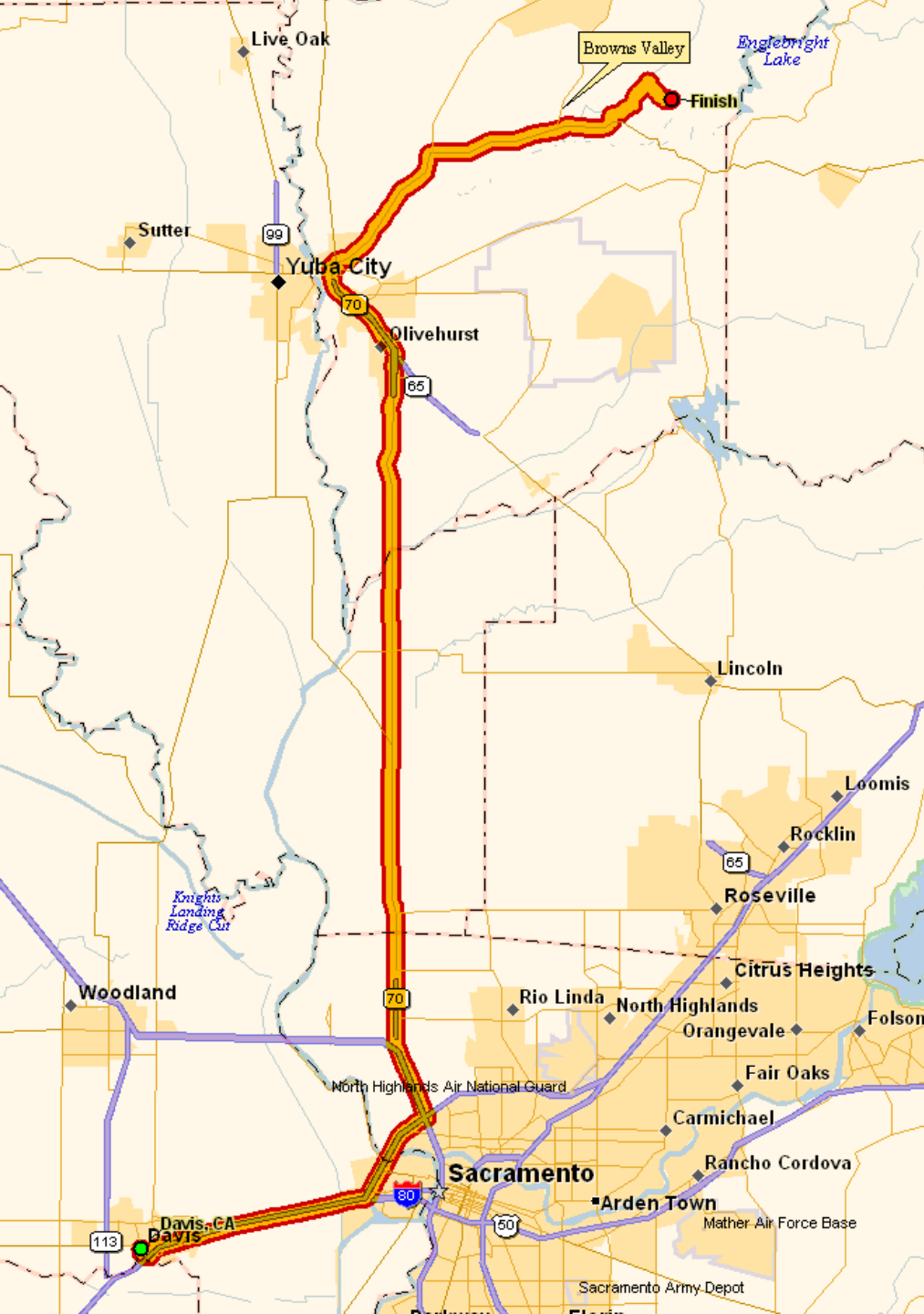


Sierra Foothill Research and Extension Center Browns Valley, CA



http://danrrec.ucdavis.edu/sierra_foothill/home_page.html



8279 Scott Forbes Road
Browns Valley, CA 95918
Phone: (530) 639-8800

72 Miles from UCD,
approximately 1.5 hour travel time

Resources:

RANGELANDS

The SFREC contains 5,721 acres including approximately:

- 4,945 acres of dry annual rangeland
- 160 acres of irrigated pasture
- 272 acres of ungrazed natural areas
- 353 acres developed with facilities, roads, and housing.
- Grazed acreage is fenced into 81 fields of varying sizes; fencing configurations change with research needs.
- Yuba River Frontage

N
o
r
t
h

PROJECT AREAS & THEIR ACREAGE

CAMPBELL	
* CI-11	474.2
* CI-21	16.5
TOTAL	490.5

SHUBERT (SH)	
SHI-11	207.0
SHI-21	180.0
SHI-31	163.0
SHI-41	37.0
SHI-51	34.7
TOTAL	621.7

FORBES	
FI-11	34.8
FI-12	31.0
FI-13	32.3
FI-14	32.1
FI-21	35.0
FI-22	31.2

FORBES (CON'T)	
FI-23	34.7
FI-24	33.5
FI-31	34.2
FI-32	34.3
FI-33	34.3
FI-34	32.0
FI-41	29.9
FI-42	30.5
FI-43	31.6
FI-44	30.3
FI-51	66.1
FI-51	160.0
FI-52	172.8
FI-53	487.7
TOTAL	1408.9

HAWORTH	
HI-11	10.5
HI-12	12.5
HI-13	12.5
HI-21	22.0
HI-31	10.4
HI-41	6.3
HI-51	3.1
HI-61	12.4
HI-71	23.4
HI-81	87.9
HI-91	20.4
HI-101	14.1
HI-111	43.6

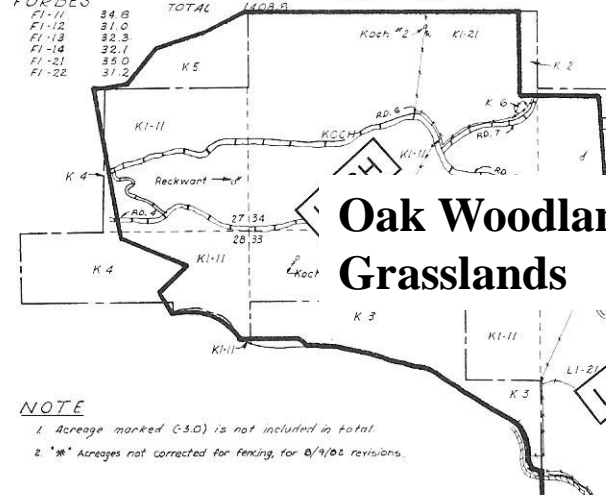
HAWORTH (CON'T)	
HI-121	9.4
HI-131	9.5
HI-141	3.1
TOTAL	593.2

LEWIS	
LI-11	207.0
LI-21	320.8
LI-31	1.8
LI-41	1.8
TOTAL	527.8

KOCH	
KI-11	996.1
KI-21	103.0
KI-31	17.3
KI-41	91.1
KI-51	77.0
KI-61	55.0
KI-71	4.0
TOTAL	1255.2

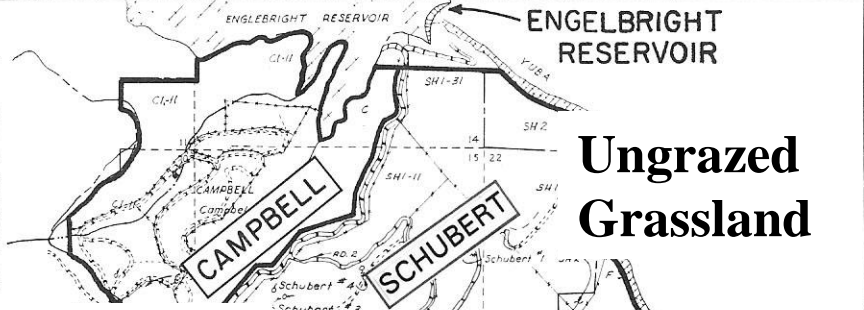
PORTER	
PI-11	44.2
PI-12	33.0
PI-13	71.2
PI-14	51.4
PI-21	47.0
PI-31	31.6
PI-41	5.0
PI-51	18.6
PI-61	26.0
PI-71	9.1
PI-81	2.4
PI-91	13.5
TOTAL	352.6

SCOTT (SC)	
SC-11	1.6
SC-21	4.7
SC-31	4.7
SC-41	4.7
SC-51	31.4
SC-61	1.9
SC-71	4.2
SC-81	22.0
SC-91	1.1
SC-101	28.9
SC-111	3.1
SC-121	194.8
SC-131	72.9
SC-141	238.5
SC-151	20.4
SC-161	7.9
SC-171	11.0
SC-181	3.9
SC-191	9.4
SC-201	6.3
TOTAL	745.4



Oak Woodlands, Grasslands

Oak Woodlands, Grasslands, Selective clearing



Ungrazed Grassland

Open Grasslands

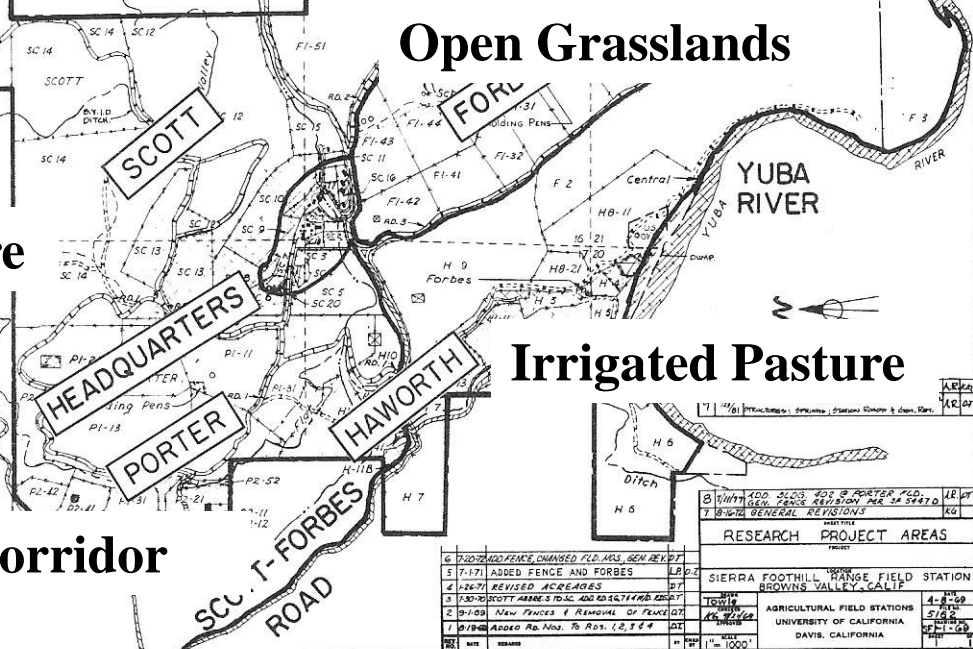
Irrigated Pasture

Irrigated Pasture

Riparian Corridor

NOTE
1. Acreage marked (S.O.) is not included in total.
2. * * * Acreages not corrected for fencing, for 8/9/82 revisions.

- LEGEND
- PROPERTY BOUNDARY
 - IMPROVED STATION ROAD
 - UNIMPROVED PUBLIC ROAD
 - IMPROVED PUBLIC ROAD
 - UNIMPROVED PUBLIC ROAD
 - FENCE
 - POWER LINE
 - RIVER
 - IRRIGATION DITCH
 - STREAM
 - SPRING
 - IRRIGATED PASTURE
 - WEATHER STATION
 - HEADQUARTERS AREA
 - ROAD NUMBER
 - FOUR WHEEL DRIVE ROAD (DRY WEATHER ONLY)
 - OLD PLOTS
 - WATER STORAGE TANK



6	1200	ADDED FENCE CHANGED FLD. LRS. GEN. REV. DT	12/01/82
5	1171	ADDED FENCE AND FORBES	12/01/82
4	1267	REVISED ACREAGES	12/01/82
3	1200	SCOTT ACREAGE TO ACC. ADD. RAILROAD ERECT	12/01/82
2	1109	New Fences & Removal of Fence DT	12/01/82
1	1109	Added Rd. Nos. To Rds. 1, 2, 3 & 4	12/01/82
0	1109	Added Rd. Nos. To Rds. 1, 2, 3 & 4	12/01/82

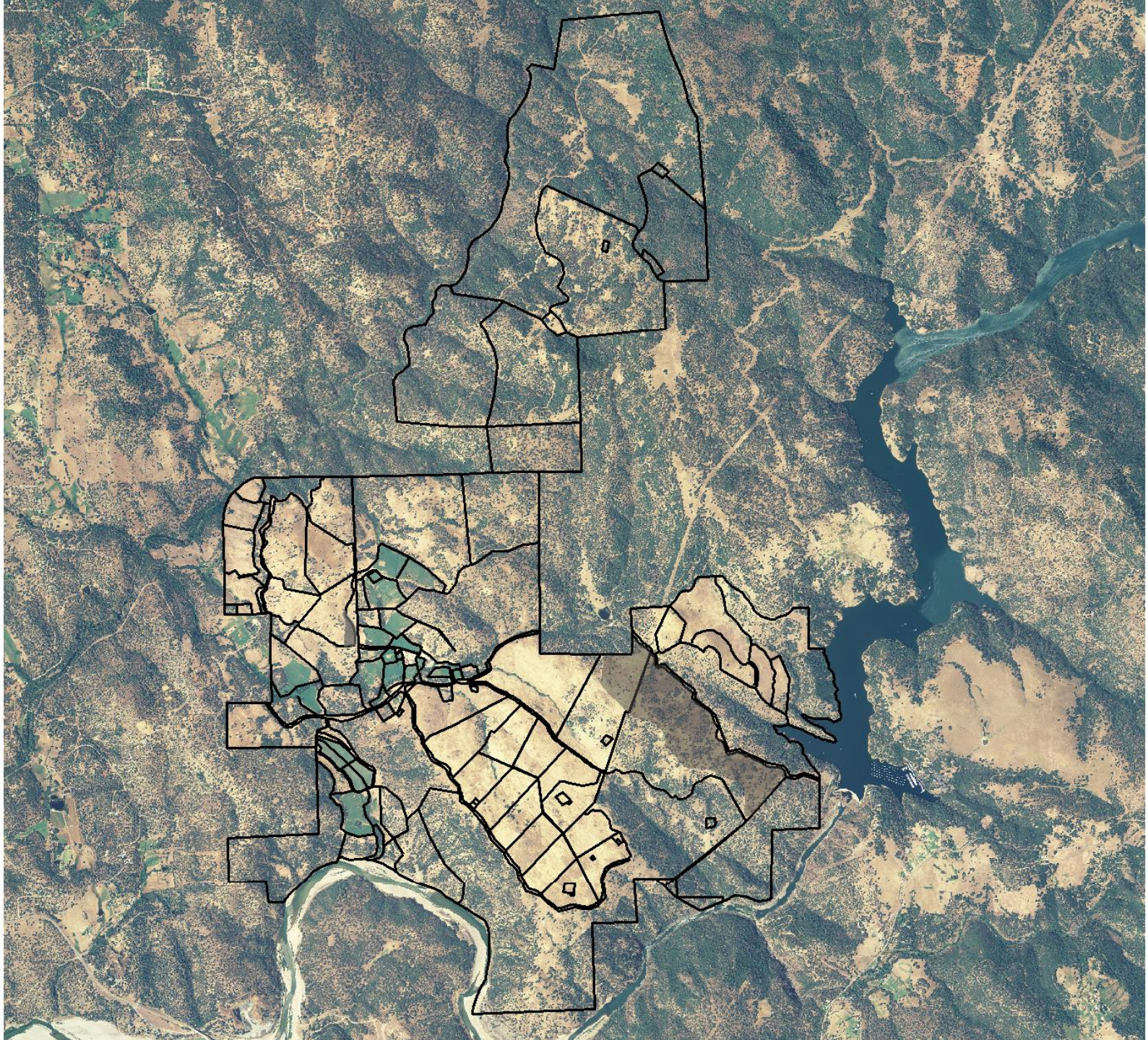
RESEARCH PROJECT AREAS

SIERRA FOOTHILL RANGE FIELD STATION
BROWN VALLEY, CALIF.

AGRICULTURAL FIELD STATIONS
UNIVERSITY OF CALIFORNIA
DAVIS, CALIFORNIA

SCALE 1"=1000'





Resources:

OAK WOODLANDS

- ~ 1,550 acres have been almost totally cleared (less than 10% canopy cover or less than 5 trees per acre)
- ~ 1,365 acres have been partially cleared or thinned (from 10% to 75 % canopy cover or 10 to 100 trees per acre)
- ~ 2,805 acres remain unmodified oak woodlands
- 12 of the unmodified woodlands (272 acres) designated as natural areas with no major modification to vegetation or grazing by domestic animals

Resources:

RIPARIAN CORRIDORS

The SFREC contains almost the entire watersheds of six small permanent streams within its boundaries

Most stretches of the seven permanent streams found on the SFREC are bordered with riparian vegetation.



Porter Creek has an established Nature Trail open to the public, approximately a mile long with a section allowing wheelchair access.

Resources:

WILDLIFE

145 bird species, 12 reptile species, 4 amphibian species, and 35 mammal species, including threatened and endangered species.

The Yuba River is **unique** among California's large anadromous fish streams in that it is managed as a wild stream without hatchery facilities.



Supported Research Project Areas

- **Animal Health and Beef Cattle Management**
- Hardwood Range Management & Regeneration
- **Ecology & Management of Annual Grass – Oak Woodland Rangelands**
- Watershed Management & Water Quality
- Rangeland Resource Management
- **Weed Management**
- Wildlife Ecology



Staffing

- Director (40%)
 - CE Specialist (60%)
Environmental Toxicology
- Business Officer
- Administrative Assistant
- Sr. Supt of Agriculture
- Principal Ag Technician
- Sr. Ag Technician
- Ag Technician
- Animal Health Technician
- Farm Maintenance Worker

